

NO.	MARSHALL Co.	PG-PGA	FT-FTA	RB	P	TP	A
G 14	RAY HEIKKINEN	1-2	0-0	0	0	2	2
G 15	MITZEL BOBSONSK	1-3	0-0	2	2	2	1
C 44	LAURA SEAY	3-6	0-1	4	0	6	0
F 33	SHANNA SMITH	3-7	2-2	5	2	8	3
F 30	LISA JARRETT	4-8	1-2	2	1	9	1
42	SECRET WATKINS	1-1	0-0	1	0	2	0
23	MARY LEE SWAN	-	-				
41	SHELLY ROGERS	-	-				
11	KELLY CHAMBERS	-	-				
35	TINA PAYNE	-	-				
51	JULIE SCHAPER	-	-				
13	KIM CROWELL	-	-				
		-	-				
		-	-	0	DB		
TOTALS		13-27	3-5	14	5	29	7

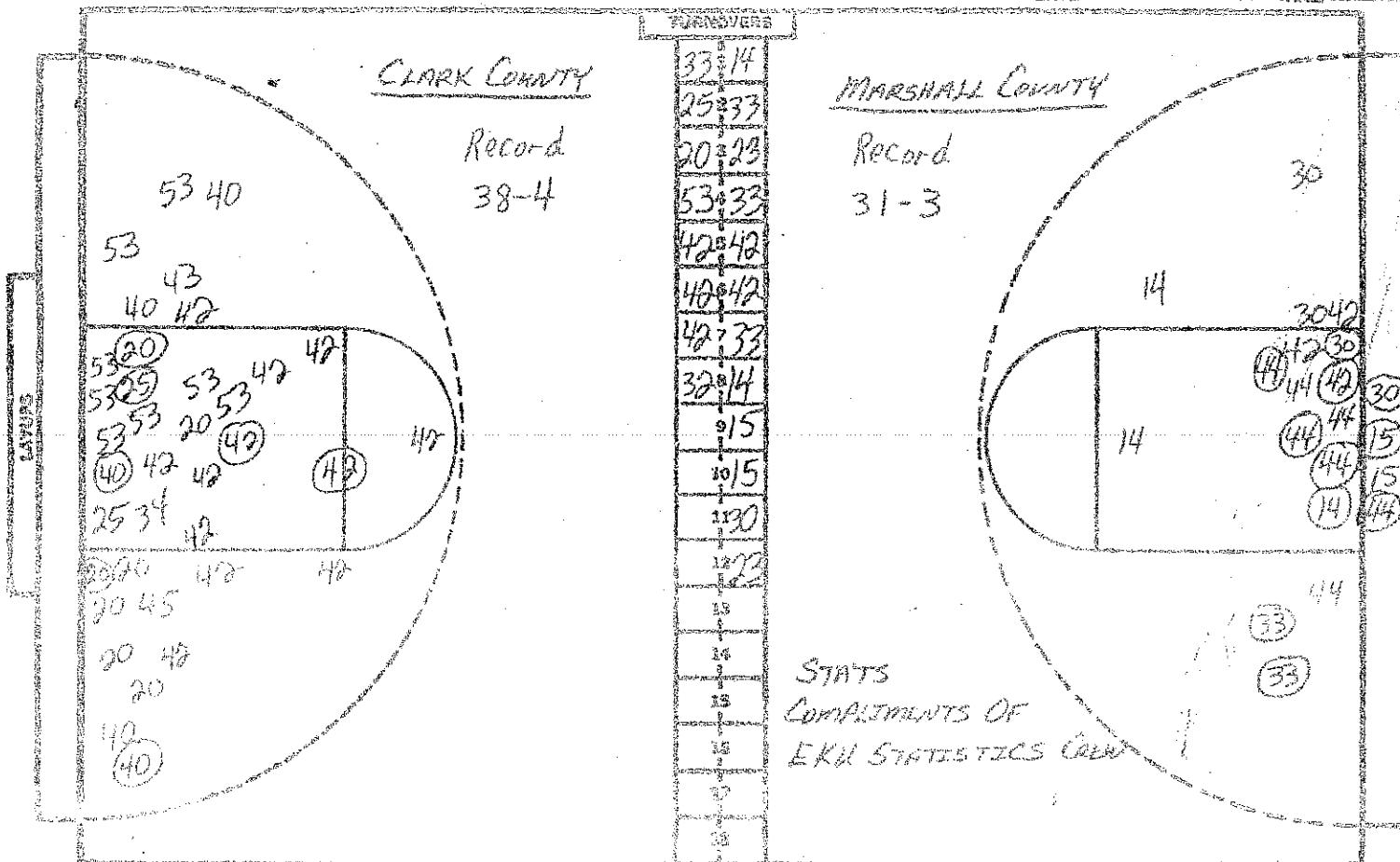
NO.	CLARK Co.	PG-PGA	FT-FTA	RB	P	TP	A
G 42	SALLY MANLEY	3-9	0-0	1	0	6	1
G 20	CINDI CLAY	2-9	2-2	5	1	6	0
C 25	VELMA JORDAN	2-4	3-4	7	2	7	0
F 53	CELTA COOPER	0-2	0-0	4	1	0	1
F 40	SHARON MARTIN	2-5	1-2	3	1	5	0
33	JENNI KIRK	0-0	0-0	0	1	0	0
34	SHERI SWAPP	-	-				
23	LISA COLLINS	-	-				
32	KANDI PROFFITT	-	-				
45	SELETA ROSE	-	-				
43	DAPHNE HARRISON	-	-				
		-	-				
		-	-	1	DB		
TOTALS		9-29	6-8	21	6	24	2

PERCENTS 48.1 60.0 2 TEAM REBOUNDS (NOT IN TOTALS)

PERCENTS 31.0 75.0 1 TEAM REBOUNDS (NOT IN TOTALS)

QTKS
SCORE BY MARSHALL COUNTY
15-14=29
OFFICIALS: JAN BAKER & BUD MOORE

CLARK COUNTY
12-12=24



NO.	CLARK Co.	FG-PGA	FT-FTA	RB	P	TP	A
G 42	SALLY MALLEY	5-21	5-7	4	4	15	2
G 20	CINDI CLAY	4-16	4-4	7	1	12	1
C 25	VELMA JORDAN	3-6	3-4	12	2	9	0
F 53	CELIA COOPER	0-11	0-0	8	3	0	1
F 40	SHARON MARTIN	4-10	1-3	5	5	9	0
33	JEWEL KIRK	0-0	0-0	2	2	0	0
34	SHERI SWAMP	0-1	2-2	1	0	2	0
23	LISA CULYAS	0-0	0-0	0	0	0	0
32	KANDI PROFFITI	0-0	0-0	1	0	0	0
45	SELYTA ROSE	0-1	0-0	0	0	0	0
43	DAPHNE HARMON	0-1	0-0	1	0	0	0
		-	-				
		-	-				
		-	-	2	DB		
TOTALS		16-67	15-20	43	17	47	4

PERCENTS 23.9 76.0 4 TEAM REBOUNDS (NOT IN TOTAL)

CLARK COUNTY

12-12-7-16=47

SCORE BY OFFICIALS

JAN BAKER & GUY MOORE

NO.	MARSHALL Co.	FG-PGA	FT-FTA	RB	P	TP	A
M 41	GAYE HEICKLHART	2-5	0-2	1	3	4	3
15	MITZI BRADSHAW	2-5	1-2	5	4	5	2
C 44	LAURA SEAY	7-13	0-1	10	1	14	0
F 33	SHANNA SMITH	5-9	2-3	8	3	12	3
F 30	LISA JARRETT	6-12	6-7	5	1	18	1
42	SECRET WATKINS	2-4	0-0	4	3	4	0
23	MARY JANE SAMP	0-0	0-0	0	1	0	3
41	SHELLY ROBBERS	0-0	0-0	0	0	0	0
11	KELLY CHAMBERS	0-0	0-0	0	0	0	0
35	TEVA PAVONE	0-0	0-0	0	0	0	0
51	JULIE SCHAPIER	0-0	0-0	1	0	0	0
13	KEA CROWELL	0-0	0-0	0	0	0	0
		-	-				
		-	-				
		-	-	1	DB		
TOTALS		24-48	9-15	35	16	57	12

PERCENTS 50.0 60.0 4 TEAM REBOUNDS (NOT IN TOTAL)

MARSHALL COUNTY

15-14-16-12=57